

INFINITY LOCKER SYSTEM

One locker. INFINITE possibilities.

*THE SUPERIOR END USER
RECONFIGURABLE LOCKER SYSTEM*

AVAILABLE IN A FULL RANGE OF SIZES

*FEATURES A WIDE RANGE OF
RECONFIGURABLE INTERNAL STORAGE
AND ORGANIZATIONAL COMPONENTS*

*REDESIGNED LANCE PATTERN FOR
GREATER RANGE OF ADJUSTABILITY*

*18 GAUGE WELDED CONSTRUCTION
WITH INDEPENDENT BASE DRAWER
AND ELECTRICAL OPTIONS*

*CAN BE CONFIGURED TO MEET
MULTIPLE STORAGE APPLICATIONS*



(24"W with external base drawer shown)



*Manufacturing Quality
Metal Products
Since 1903*

INFINITY



INFINITY LOCKER KIT OPTIONS



VALUE KIT

Includes: full width shelf with integral hang bar, 3-hook rail



BASIC KIT

Includes: full width shelf with integral hang bar, 3-hook rail, lock box, removable boot tray



INTERMEDIATE KIT

Includes: full width shelf with integral hang bar, 3-hook rail, lock box, full width perforated shelf, document holder, mirror



PREMIUM KIT

Includes: full width shelf with integral hang bar, 3-hook rail, lock box, full width perforated shelf, document holder, mirror, removable boot tray, perforated drying rack, power strip rail



PREMIUM PLUS KIT

Includes: full width shelf with integral hang bar, 3-hook rail, side panel hook, lock box, full width perforated shelf, mirror, removable boot tray, perforated drying rack, power strip rail, security drawer



SWAT KIT

Includes: full width shelf with integral hang bar, full width perforated shelf, integral lock box and 3-hook rail, perforated drying rack, 3-hook rail, small shelf, long gun mounting kit

** All Infinity Locker Kits are shown with optional base drawer unit*



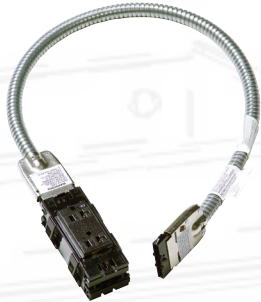
TIFFIN METAL PRODUCTS COMPANY™

450 Wall Street · Tiffin, Ohio 44883
800-537-0983 · www.tiffinmetal.com



INFINITY LOCKER COMPONENTS

One locker. INFINITE possibilities.



ELECTRICAL KIT

UL listed modular plug and play electrical components. Supply power to locker opening for charging your standard issue and personal electronic devices.



REMOVABLE BOOT TRAY

Removable 2-piece metal tray collects moisture and debris from footwear keeping your locker opening clean.



BASE DRAWER UNIT

The heavy duty external base drawer is available in 3 depth options: 24 inches flush with locker or extended at 33 or 36 inch depths to allow for the hardwood bench top. Drawer features heavy-duty glides and a load capacity of 200lbs. Keyless lock automatically locks even when locker door is closed. Image shown with the optional perforated drying rack perfect for storing body armor.



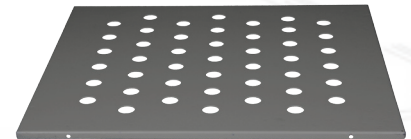
FULL WIDTH SHELF WITH INTEGRAL HANG BAR

Full width upper shelf with the integral hang bar uniquely designed with partitions to maintain space between garments for optimum airflow.



FULL WIDTH SHELF

Full width heavy-duty solid shelf can be positioned at any height in locker opening. Perfect for storing everything from headgear to ammunition.



FULL WIDTH PERFORATED SHELF

Full width shelf with perforations to maximize ventilation. Perfect for storing body armor.



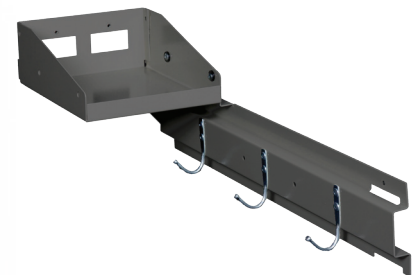
3-HOOK RAIL

Adjustable rail at side panel provides 3 hooks for hanging storage. Perfect for belt and seasonal outwear. Available in left and right hand models.



INTEGRAL LOCK BOX AND 3-HOOK RAIL

Providing a more standard wardrobe locker configuration this is an extremely durable combination of the two most popular accessory components. Lock box provides an added level of security. Now paired with the 3-hook rail for all your hanging storage needs. Available in left and right hand models.



INTEGRAL SMALL SHELF AND 3-HOOK RAIL

This combined pairing of components provides greater durability of the small shelf and is a common configuration. Available in left and right hand models.

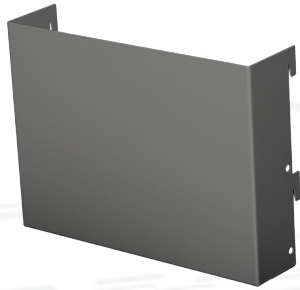


Manufacturing Quality
Metal Products
Since 1903

INFINITY



INFINITY LOCKER COMPONENTS



DOCUMENT HOLDER

Strategically mounted at the interior door this component allows for easy access to documents and notebooks.



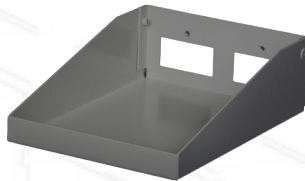
LOCK BOX

For an added level of security this lockable compartment is perfect for sidearm or personal valuables. (6.793"wx9.010"hx12"d)



POWER STRIP RAIL

Accessory component when power is supplied to locker opening. Allows for adjustable and easy access for charging electronic devices. Power cord is easily fed through cut outs in shelves to access the receptacle at the top of the locker.



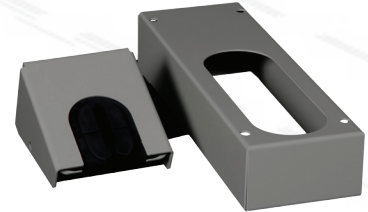
SMALL SHELF

Small adjustable shelf is perfect for storing cell phone, wallet and car keys. (6"wx8"d)



FULL WIDTH HALF SHELF

Full width half shelf commonly used in the lower portion of locker opening provides added shelving without reducing available hang space for garments. (8"d)



LONG GUN MOUNTING KIT

2 pc mounting kit includes adjustable barrel holder and stock base for your long gun storage needs.



SIDE PANEL HOOK

Hook component allows for additional hanging storage at side panel. Available in left and right hand models.



MIRROR

Durable, magnetic locker mirror (8"wx10"h)



SECURITY DRAWER

Internal drawer kit is adjustable throughout locker opening. Available in a keyed lock model. (drawer measures 16.342"w x 6.086"h)



TIFFIN METAL PRODUCTS COMPANY™

450 Wall Street · Tiffin, Ohio 44883
800-537-0983 · www.tiffinmetal.com

